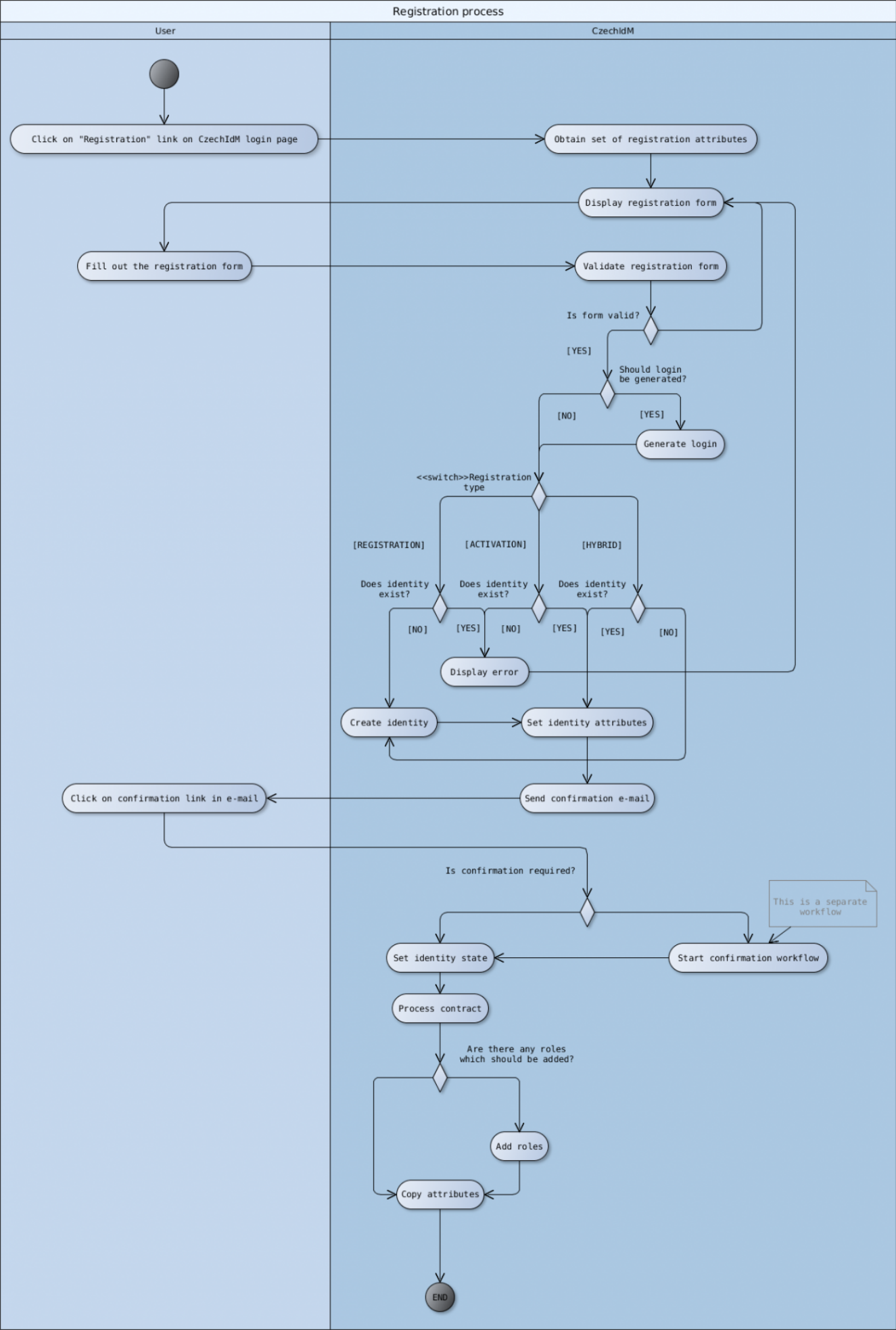


# Modules - User registration [reg]

Reg module serves as a registration point for new users to access CzechIdM. To be a registered user, one has to go through several validation steps before he can log in to CzechIdM. Validation steps are configurable in CzechIdM. Enabled module adds new GUI form available via CzechIdM login page and manages all the registration process:



# Obtaining set of registration attributes

When user tries to access registration form, registration module needs to determine which attributes (or form fields) should be displayed in said form for user to fill out. These attributes are determined by reg form definition and attributes defined in it. The mechanism is same as standard EAV forms.

## Identifier attributes

Registration module allows to specify set of attributes, which will be used for identity search, when looking up the identity (in ACTIVATION mode), or determining, whether the identity exists or not (in REGISTRATION mode). These attributes should be configured in `idm.pub.reg.attributes.identifier` as a comma separated list of attribute codes. Attributes, defined as identifiers, must meet these requirements

- Attribute with the same code must be defined in reg form definition
- Attribute must be either identity attribute, or EAV attribute in default form definition for `IdMIdentity`
- If EAV attribute is used, then it must be of `SHORTTEXT` type, otherwise search will not work as intended.

## Example

- Attributes in default `IdMIdentity` form definition : `birthNumber`, `address`
- Attributes in reg `IdMIdentity` form definition: `username`, `email`, `firstName`, `lastName`, `birthNumber`
- `idm.pub.reg.attributes.identifier=username,email,birthNumber`

These settings will display attributes `username`, `email`, `firstName`, `lastName`, `birthNumber` in registration form. Attributes `username`, `email` and `birthNumber` will then be used to determine, whether the identity with these attributes exists in IdM, or not. Attributes `username` and `email` will be compared with corresponding identity attributes and attribute `birthNumber` is compared with the values of the attribute with the same code in default `IdMIdentity` form definition.

## Validation of registration form

Validation of registration attributes has two steps: basic fields validation and password validation. In the first phase, module checks, if all required attributes are filled. (Attribute is required if it has required field checked in its configuration in reg form definition, or if its defined as identifier attribute). After that, password is checked against default validation policy.

## Generating login

Registration module supports various login generators. Name of the login generator can be configured

in property `idm.pub.reg.loginGenerator`. This property should contain full `className` of login generator, which we want to use. This class must implement `eu.bcvolutions.idm.reg.login.LoginGenerator` interface.



Note that all attributes which are used during registration process must be defined in reg form definition (including username attribute). To prevent username attribute showing in registration form, you can mark it as read-only. Attributes marked as read-only will not be displayed in registration form for user to fill in, but can be filled by different means such as various generators.

## BasicLoginGenerator

Basic login generator is the only login generator shipped with registration module. It uses last name + first character or first name. If that is taken, appends a number.

### Example

Following configuration shows how to configure `BasicLoginGenerator` (which is shipped with registration module) as a login generator.

- `idm.pub.reg.loginGenerator=eu.bcvolutions.idm.reg.login.BasicLoginGenerator`

## Registration modes

Registration module supports three registration modes - REGISTRATION, ACTIVATION and HYBRID. Main difference between these modes is how they handle identity creation. This is visualized in the activity diagram above.

### Setting registration mode

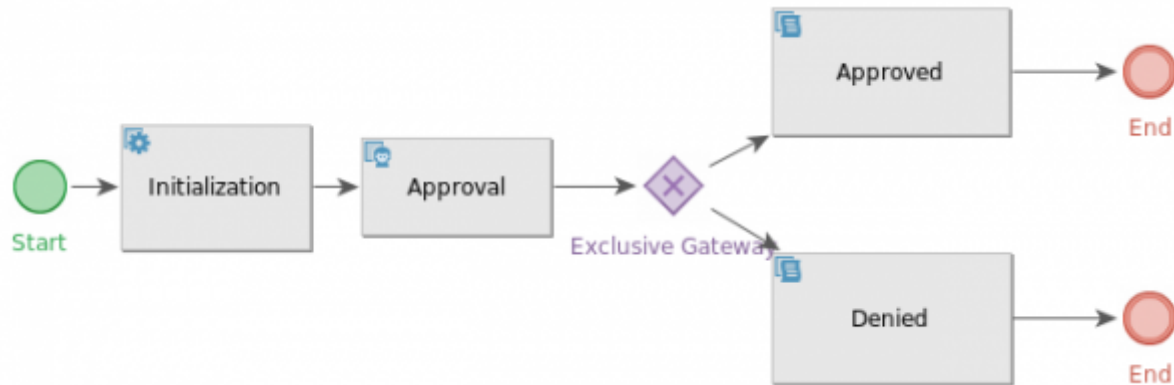
Registration mode is set using `idm.sec.reg.activationMode`. This property can contain one of the following three values : REGISTRATION, ACTIVATION, HYBRID.

## Setting attributes and creating identity

In order to understand how registration module works, we need to explain how and when are fields from registration form set to identity. Right after the validation of registration form, all fields are set to reg EAV form. At this point, you can see all attributes that given user filled in registration form. After registration approval, all attributes are copied from reg form to identity attributes, or default form definition for `IdMIdentity`.

## Registration confirmation

By default, a confirmation is required for every user who registers. Registration approval process is displayed on the image below



After approving, the registration process continues with finalization of identity (setting up state and adding roles). In case of denial of registration, created identity is deleted and process ends. You can turn off registration approval by disabling RegApproveProcessor.

## Handling password

There are many ways user can set their password when registering in CzechIdM. The most preferable way is to let user to set their password when filling out registration form. In order to do this, we must set up password attribute in reg EAV definition. In order to do so, we need to do the following:

- Create eav attribute in reg form definition, which has the same code, that is set in `idm.pub.reg.attributes.password.attr` property
- Set its type to `SHORTTEXT`
- Mark the attribute as confidential
- Set attributes renderer to Password field

Now, new users will be prompted to enter password when filling up registration form. This newly set password is validated against default validation policy. To change that behavior, you can set different policy in `idm.sec.reg.passwordPolicy` property.



Password is set to identity at the moment of creation. This means, that only thing, which prevents user to log in before confirmation and approval of registration is fact, that the corresponding identity has not yet been enabled. Also mind that this means, that any accounts, which will be created after registration, will have different passwords set to them (if said accounts require password).

## Other ways to set user password after registration

- Use password reset module
- Administrator manually sets users password after registration
- There is an endpoint, which supports setting user password when clicking on confirmation link. This however is not supported in FE, so clients would have to support their own FE page, which si handling this kind of logic.

## "Accept terms and conditions" feature

Registration module supports feature, which requires users who register to check that they accept terms and conditions. In order to set this up, you need to do the following:

- Create eav attribute in reg form definition
- Set attributes type to Boolean
- Set attributes renderer to "Terms"

New checkbox will now appear in registration form and users wont be able to submit registration form, unless they check this new checkbox.

## Configuration

Property	Possible values	Description
idm.sec.reg.defaultRoles	Comma separated list of role codes	Setting up this property enables adding roles after registration confirmation. If this property is not set, no roles will be added when user registration is approved
idm.sec.reg.passwordPolicy	Name of one of the validation password policies	Setting this property changes password policy, which will be used when validating password. If this property is not set, default validation policy is used instead. If property is set and no policy for that name is found, then exception is thrown
idm.sec.reg.identityStateAfterConfirmation	CREATED, NO\_CONTRACT, FUTURE\_CONTRACT, VALID, PASSWORD\_EXPIRED, LEFT, DISABLED, DISABLED\_MANUALLY	This property contains value of state, which will be set to identity after registration approval. Note that this could get overwritten by HR processes.

Property	Possible values	Description
idm.reg.sec.confirmationTtlSec	Positive integer number	Sets duration for how long is confirmation token valid (in seconds)
idm.pub.reg.loginGenerator	Bean name	Contains bean name of login generator, which should be used for generating of login. If this property is not set, then generating of logins will not be enabled and not entering username in registration form will result in error.
idm.sec.reg.defaultOrgId	UUID	Contains identifier of treeNode, which will be set as work position for registered users contract.
idm.sec.reg.defaultAuthorizer	Username	Username for user, which should be used as a default guarantee for registered users contract.
idm.pub.reg.passwordInputEnabled	true/false	Turns password validation on and off
idm.pub.reg.attributes.password.attr	String	Name of reg eav attribute used to store password. This must be set, otherwise users would not be able to log in.
idm.sec.reg.defaultAttributeType	CHAR, SHORTTEXT, TEXT, INT, LONG, DOUBLE, BOOLEAN, DATE, DATETIME, BYTEARRAY, UUID	Type of EAV used to build query to search identities. Only SHORTTEXT is supported now.
idm.pub.reg.attributes.identifier	Comma separated list of EAV codes	List of attributes used for identity searches.
idm.sec.reg.activationMode	REGISTRATION, ACTIVATION, HYBRID	Sets mode for identity registration
idm.sec.reg.onlyActiveIdentities	true/false	This applies only in ACTIVATION mode. This property says, that only active identities are allowed to register.
idm.sec.reg.changePasswordInIdM	true/false	If this property is set to true, then registration module will set password in IdM
idm.sec.reg.changePasswordEveryWhere	true/false	If this property is set to true, then registration module will set password on all users accounts
idm.sec.reg.createEnabledIdentity	true/false	If true, then identity state will be enabled after creation. Note that this could be overwritten by HR processes.



Property	Possible values	Description
idm.sec.reg.createEnabledContract	true/false	If false, then identity contract will be disabled after its creation (after confirmation)
idm.sec.reg.enableContractAfterConfirmation	true/false	Determines, whether contract should be enabled after approval of registration
idm.sec.reg.isUsernameInForm	true/false	If you set true registration module will be search username in form definition and this username will be used. If you set false the username must be generate some another process generator for example. <b>Default value is true.</b>
idm.sec.reg.confirmedContractExternist	true/false	If true, then registered users contracts will be marked as externist

## User registration

**czechidm**

Change passwordRegistration

Development



User registration

Create a new CzechidM Account

Login

First name



Surname

E-mail

Phone

## Approve the registration



**czechidm** [Change password](#) [Registration](#) Development  

Log in

Login

Login

Password

Password

Log in

## Admin tutorials

- [How to register to CzechIdM](#)

From:

<https://wiki.czechidm.com/> - IdStory Identity Manager

Permanent link:

[https://wiki.czechidm.com/devel/documentation/modules\\_reg](https://wiki.czechidm.com/devel/documentation/modules_reg)

Last update: **2023/02/27 13:23**

