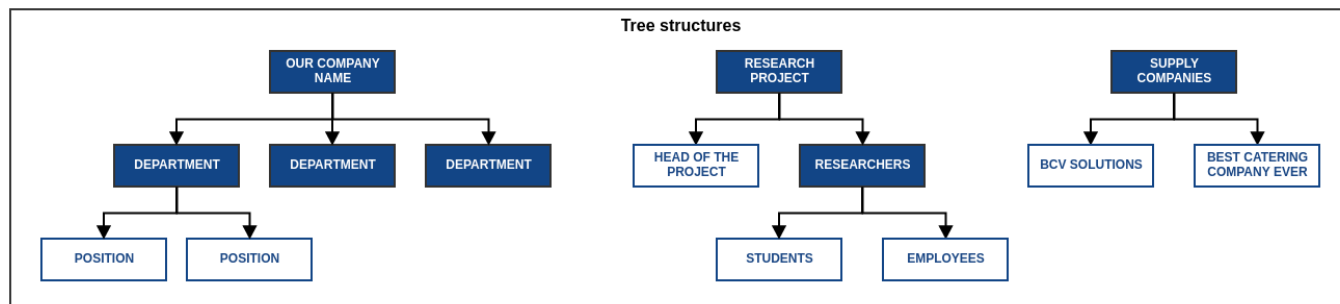


Tree structures

Tree structures in CzechIdM are used primarily for representing of organizational tree of the institution/company. Moreover, with tree structures one can represent a structure of a team project, school classes, external suppliers etc... In CzechIdM there can be multiple Tree structures at the same time and you can place the users there. Via Tree structures CzechIdM also automatically assigns roles to users.

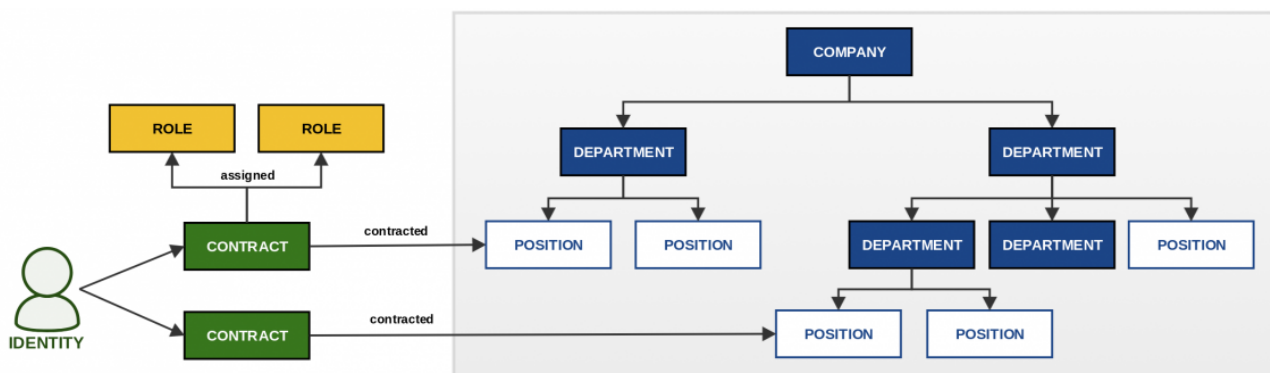


Synchronization and provisioning

Tree structures can be synchronized from source systems (e.g. HR systems). They also can be sent into managed systems (e.g. MS AD, LDAP...)

Users and contracts

Identities can be placed into tree structures through their Contracts.



Read more

Admin tutorials

- [Working with a structure and its nodes](#)
- [Add a role to a tree structure](#)

- [Creating a new contract - add a contract to tree structure](#)

Admin guide (to be completed)

- [Tree structure-related processes](#)

Devel guide

- [Implementation of indexing on tree structures](#)
- [Tree structures provisioning](#)
- [Tree structures used in synchronization](#)

From:
<https://wiki.czechidm.com/> - CzechIdM Identity Manager

Permanent link:
https://wiki.czechidm.com/devel/documentation/tree_structures?rev=1549023694

Last update: **2019/02/01 12:21**

